

# Vial2Bag Advanced™ 20mm Admixture Device: Instructions for Use

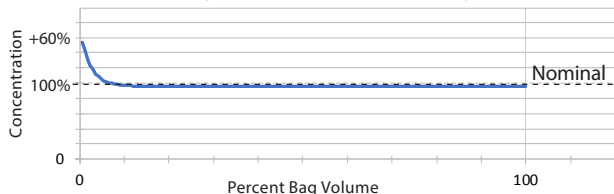
## Indication for Use

The Vial2Bag Advanced™ 20mm Admixture Device is indicated to serve as a connection between a 50, 100 or 250mL IV bag, vial with 20mm closure, and an external IV administration set. The integrated Vial Adapter makes it possible to reconstitute and/or admix drugs prior to administration to the patient.

## WARNING

- Do not omit dilution/mixing steps (Step 2); failure to dilute and/or mix drug product may result in delivery variance of +60% of target concentration at beginning of delivery.

### Improperly Mixed/Diluted Delivery Profile

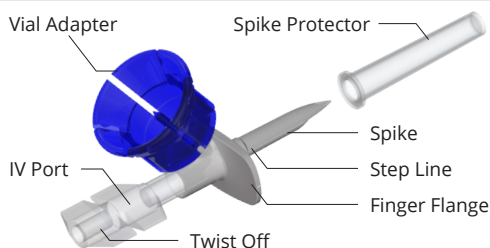


- Do not attach a Vial2Bag Advanced™ 20mm Device to another Vial2Bag Advanced™ 20mm Device.
- Do not use with IV bags other than those stated in the Indications for Use.
- Do not use with Lipids.

## Precautions

- Single-use only device.
- Do not use if device or package is damaged.
- Contents are sterile and non-pyrogenic.
- Vial must remain attached to device to avoid leakage.
- Reuse compromises safety and efficacy and may cause contamination due to loss of sterility.
- Dispose of used device in accordance with applicable regulations.
- Re-sterilization may damage the device.
- After reconstitution, use in condition recommended by the manufacturer.
- It is the Healthcare Professional's responsibility to ensure any special considerations or instructions listed on the Package Insert of the drug are adhered to, in preparation of the drug for administration.

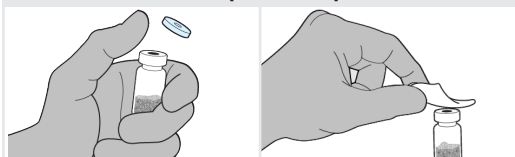
## Vial2Bag Advanced™ 20mm Admixture Device



## Preparations

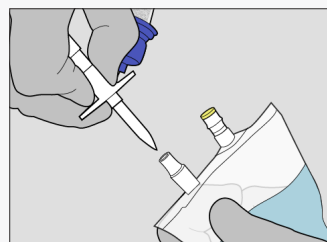
- Use aseptic technique.
- Remove cap from vial and disinfect per drug manufacturer's recommendations.

### Use Aseptic Technique



## 1 ATTACH VIAL2BAG ADVANCED™ 20MM DEVICE TO VIAL

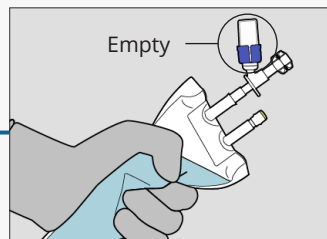
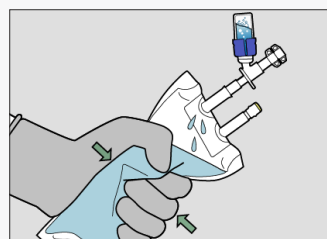
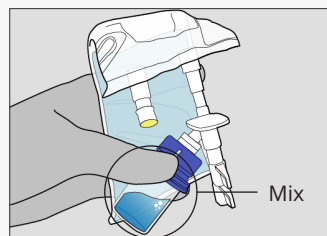
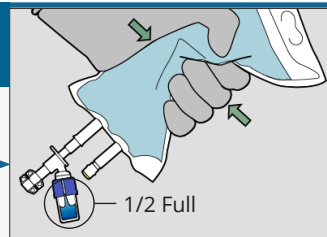
- Place vial on a stable, flat surface
- Hold Vial2Bag Advanced™ 20mm Device by the finger flange
- Push Vial2Bag Advanced™ 20mm Device into center of vial until it is attached
- Remove Vial2Bag Advanced™ spike protector
- Spike Vial2Bag Advanced™ 20mm Device into IV bag until it is up to the step line



## 2 DISSOLVE OR DILUTE DRUG

- Hold bag with vial down
- Fill vial until half full by squeezing bag repeatedly
- Fold the bag behind the vial
- Hold vial and bag together
- Mix per drug manufacturer's package insert
- Hold bag with vial up
- Empty vial by squeezing bag to force air into vial
- Inspect vial for any remaining drug
- Repeat until drug is dissolved and transferred

**REPEAT**  
until drug is dissolved and transferred



## 3 CONNECT IV SET TO VIAL2BAG ADVANCED™ 20MM DEVICE

- Twist off end to open IV Port
- Remove protector from IV set spike
- Spike the IV set per its instructions to the Vial2Bag Advanced™ IV port until it is tightly secured
- Empty drug from vial, if needed
- Leave vial in place
- Do not rotate vial

