



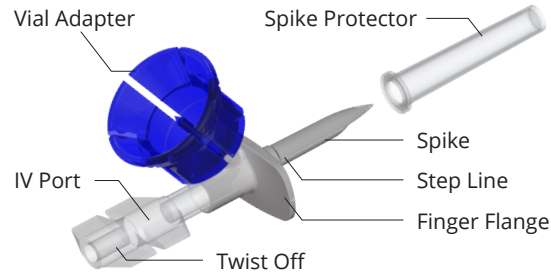
Vial2Bag Advanced™ 20mm Admixture Device: Quick Reference Guide

Consult Vial2Bag Advanced™ 20mm Admixture Device IFU for full product preparation and use detail



Scan to view full IFU and instructional video

Vial2Bag Advanced™ 20mm Admixture Device



Distributed by: Progressive Medical, Inc.
997 Horan Dr. • Fenton, MO 63026

Ordering Information: Phone: 314-961-5786
Fax: 314-961-4535 • cs@progressivemedinc.com

STERILE EO Do not use if package is open or damaged Single use only

Contains or presence of phthalate: bis (2 - ethylhexyl) phthalate (DEHP)

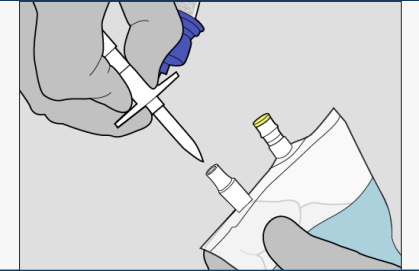
ISSUED: 19 October 2020 Ref. No: 1090209 Rev. E

1 ATTACH VIAL2BAG ADVANCED™ 20MM ADMIXTURE DEVICE TO VIAL

- Place vial on a stable, flat surface
- Hold Vial2Bag Advanced™ 20mm device by the finger flange
- Push Vial2Bag Advanced™ 20mm device into center of vial until it is attached

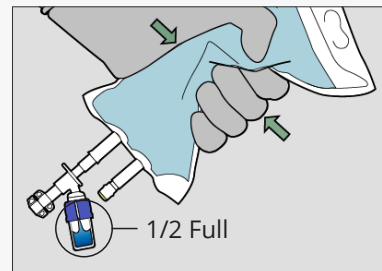


- Remove Vial2Bag Advanced™ spike protector
- Spike Vial2Bag Advanced™ 20mm device into IV bag until it is up to the step line

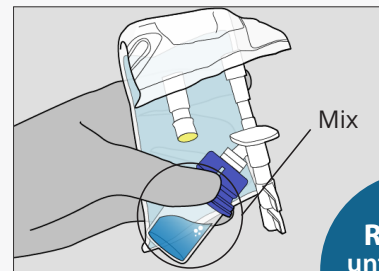


2 DISSOLVE OR DILUTE DRUG

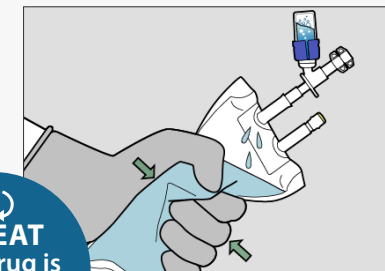
- Hold bag with vial down
- Fill vial until half full by squeezing bag repeatedly



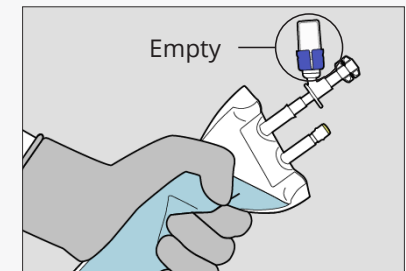
- Fold the bag behind the vial
- Hold vial and bag together
- Mix per drug manufacturer's package insert



- Hold bag with vial up
- Empty vial by squeezing bag to force air into vial



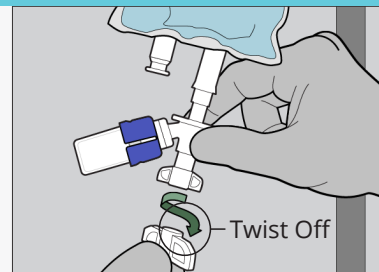
- Inspect vial for any remaining drug
- Repeat until drug is dissolved and transferred



REPEAT until drug is dissolved and transferred

3 CONNECT IV SET TO VIAL2BAG ADVANCED™ 20MM ADMIXTURE DEVICE

- Twist off end to open IV Port
- Remove protector from IV set spike



- Spike the IV set per its instructions to the Vial2Bag Advanced™ IV port until it is tightly secured
- Empty drug from vial, if needed
- Leave vial in place
- Do not rotate vial

