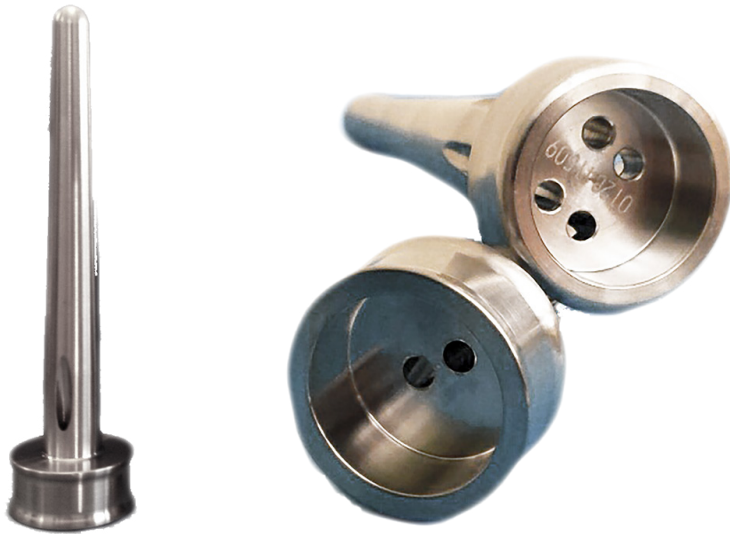


PMI SUTUREGUIDES

Reusable Surgical Grade Stainless Steel

Designed to Ensure Fascial Closure



PMI SUTUREGUIDES are designed for consistent and secure suture passing with angled guide holes, precisely positioned to enable full thickness closure of the fascia. These guides are made of surgical grade stainless steel with a tapered design in both standard and bariatric lengths.



PMI SUTUREGUIDES Features and Benefits:

- Available in multiple sizes for all needs in both standard and bariatric length in 2 and 4 hole designs
- Tapered design for ease of insertion
- Angled guide holes, precisely positioned to enable capture of all tissue layers for enhanced fascial closure
- Reusable, non-sterile and individually packaged to maximize use



Available in 2 and 4 hole designs



PMISG10



PMISG12B2



PMISG12B4

Ordering Information:

Item Number	Item Description	Qty.
PMISG10	PMI Suture Guide (10/12mm - 2 holes) - Reusable	1 ea
PMISG12B2	PMI Suture Guide Bariatric (12mm - 2 holes) - Reusable	1 ea
PMISG12B4	PMI Suture Guide Bariatric (12mm - 4 holes) - Reusable	1 ea