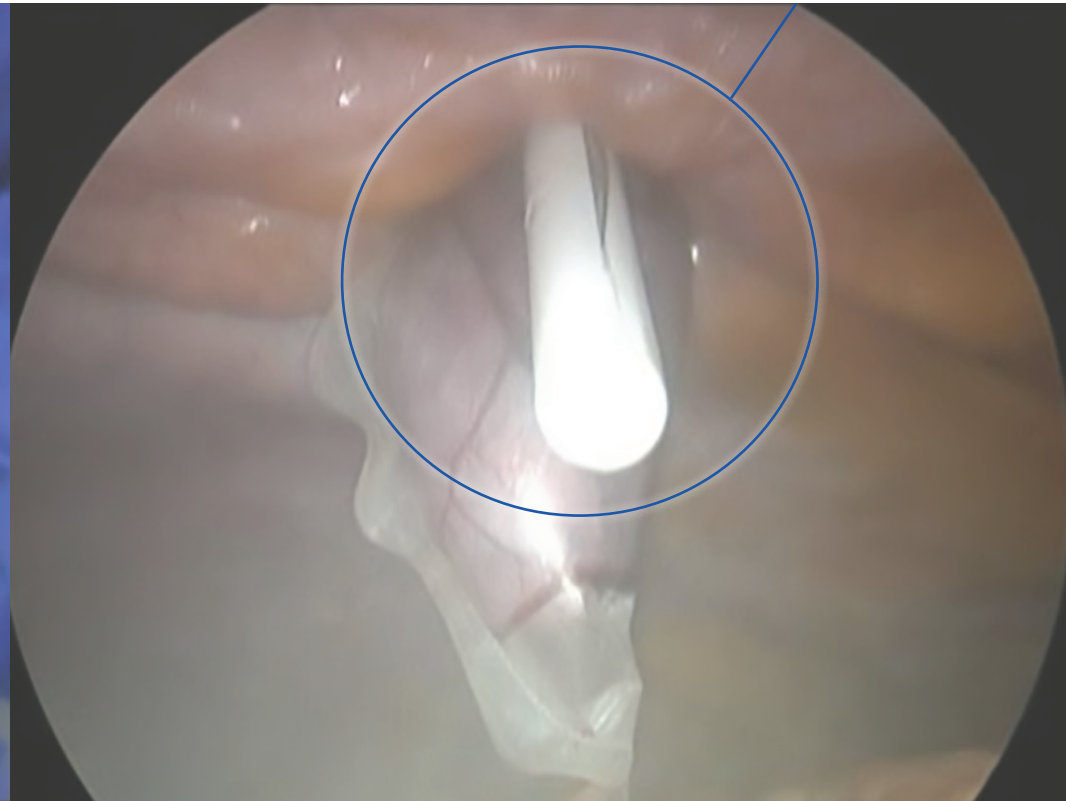


PMI EXTRACTOR-EZ[®]

A Safe, Simple and Improved Way for Removal of Large Specimens through a Larger Port Site

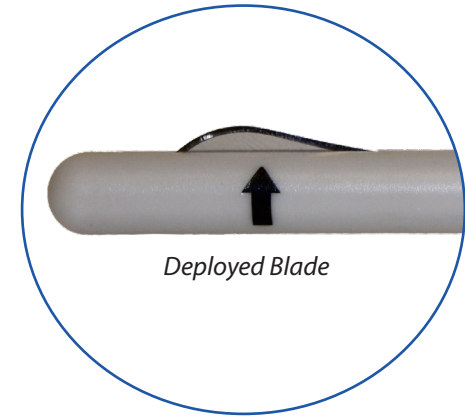
1in/2.5cm stainless steel blade with blunt end designed to safely enlarge the fascial opening



The **PMI EXTRACTOR-EZ[®]** is a unique disposable instrument designed to enlarge the fascial opening without necessarily enlarging the skin incision to facilitate the removal of larger specimens in any minimally invasive platform.

PMI EXTRACTOR-EZ® Features and Benefits:

- Designed to facilitate the extraction of any solid organ or specimen retrieval bag that is too large for removal through the port site
- Developed to improve outcomes through achieving a better approximation of fascial defect closure, reducing the risk of hernia
- Blunt tip with retractable stainless steel blade for safety while enlarging the fascial opening
- May save valuable OR time removing specimens
- Arrow on tip identifies scalpel orientation when inserted into trocar site
- Sterile, disposable product for single patient use



REDUCE the risk of scalpel injury by introducing the EXTRACTOR-EZ® into the abdominal cavity with the blade retracted.

- Reduces blade exposure without the use of a surgeon's finger as guidance
- Allows maintenance of pneumoperitoneum by using the EXTRACTOR-EZ® alone or alongside the specimen retrieval bag while in the port site



Visit us to learn more about the **PMI EXTRACTOR-EZ®**

The Perfect Complement for Simple, Safe Tissue Extraction

Ordering Information:

Item #	Description	Qty.	Blade Length	Device Length
PMIXTCR	PMI Extractor-EZ® (Disposable instrument designed to enlarge the fascial opening)	10/box	1in/2.5cm	12.5in/31.8cm